

# Kansas DOT NonDestructive Testing with Pavements Peer 11/28/2022



Rick Miller, PMS Engineer KDOT

# KDOT Interest in NDE for Pavements

---

- Mostly a report on KDOT use of FWD/TSD
- Interest in the pooled fund, but not enough hours to commit



# KDOT History with NDE for Pavements

---

- Long History with FWD (Falling Weight Deflectometer)
  - Still collecting FWD when we can
  - Ran over one FWD with Traffic Control
  - Use FWD both at Project and Network Level
- Learning to use TSD (Traffic Speed Deflection)
  - 2018-2022 ~1700 miles of TSD data
- Why does KDOT care about deflection of pavements?



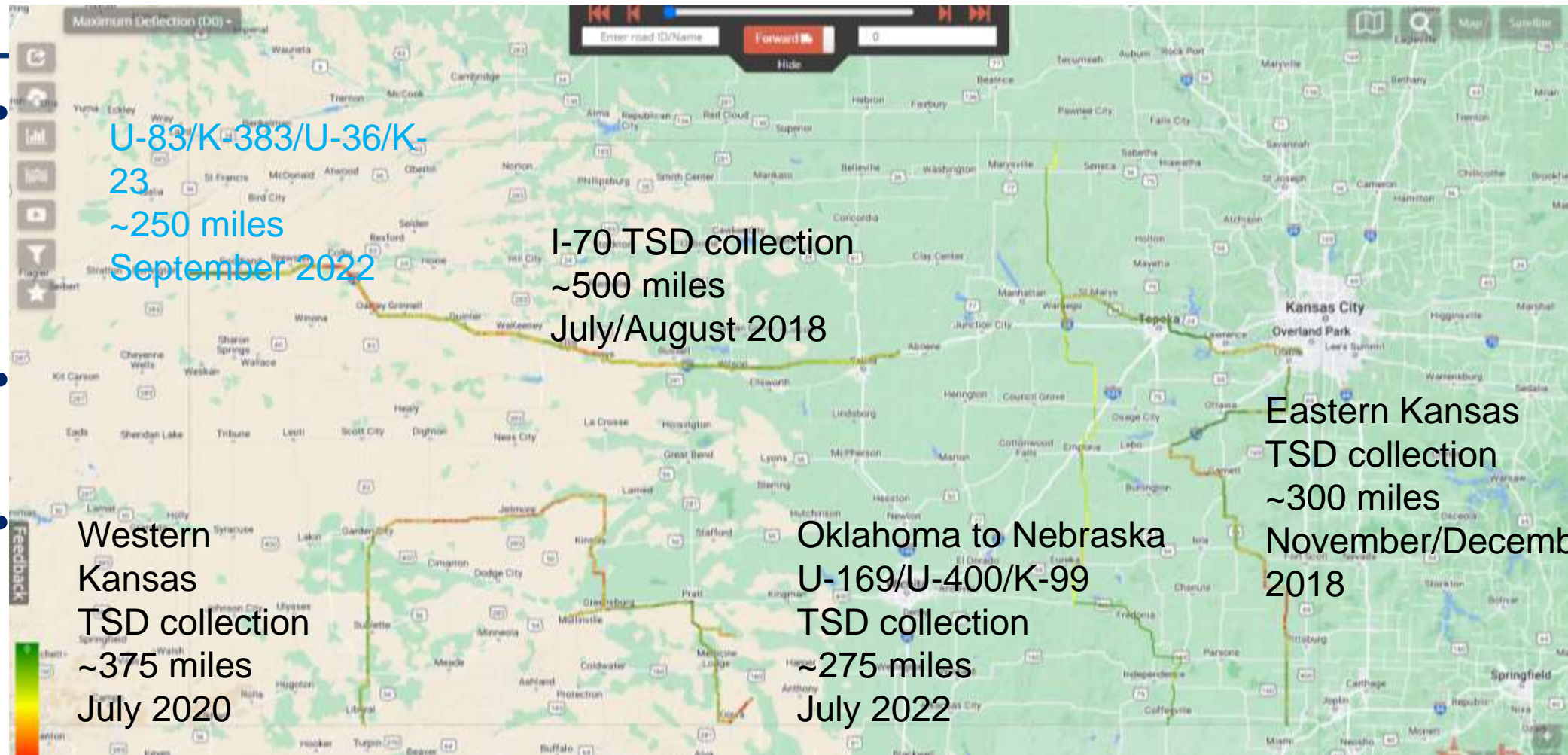
# KDOT History with NDE for Pavements

---

- Long History with FWD (Falling Weight Deflectometer)
  - Still collecting FWD when we can
  - Ran over one FWD with Traffic Control
  - Use FWD both at Project and Network Level
- Learning to use TSD (Traffic Speed Deflection)
  - 2018-2022 ~1700 miles of TSD data
- Why does KDOT care about deflection of pavements?



# KDOT History with NDE for Pavements



# KDOT History with NDE for Pavements

- Long History with FWD (Falling Weight Deflectometer)
  - Still collecting FWD when we can
  - Ran over one FWD with Traffic Control
  - Use FWD both at Project and Network Level
- Learning to use TSD (Traffic Speed Deflection)
  - 2018-2022 ~1700 miles of TSD data
- Why does KDOT care about deflection of pavements?



# KDOT TSD Findings of Note

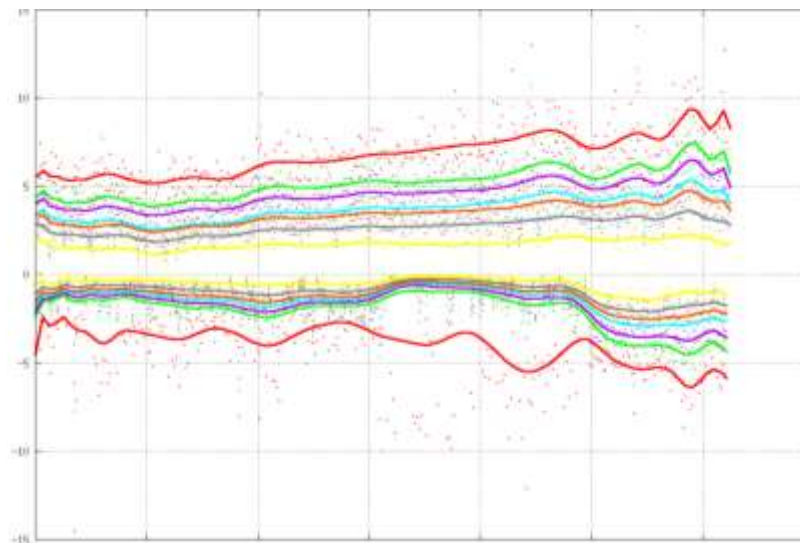
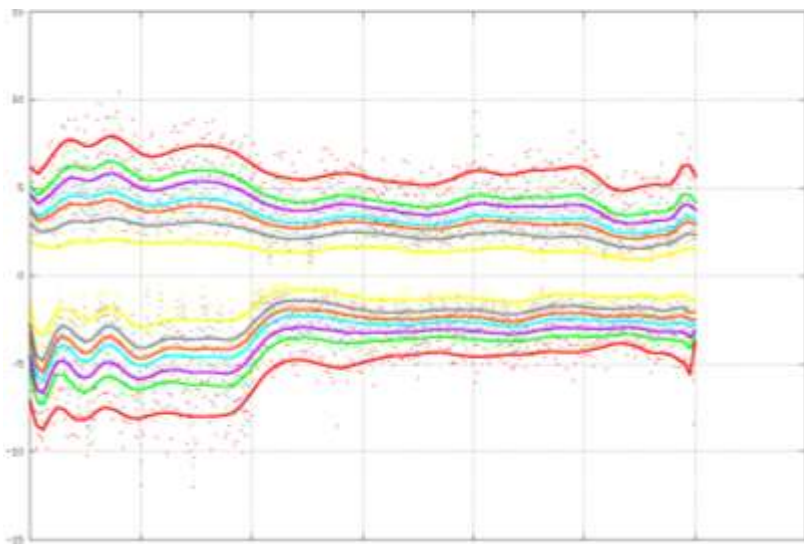
---

- Comparisons between FWD and TSD (a simple view)
- TSD and slippage (an ugly picture)
- TSD and sinkholes (what you can't see)



# KDOT TSD Findings of Note

- Comparisons between FWD and TSD (a simple view)
- TSD and slippage (an ugly picture)
- TSD and sinkholes (what you can't see)

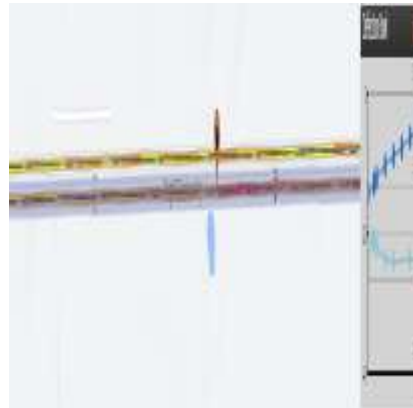




# KDOT TSD Findings of Note

---

- Comparisons between FWD and TSD (a simple view)
- TSD and slippage (an ugly picture)
- TSD and sinkholes (what you can't see)



# KDOT Future with NDE

---

- Repeat of why we care, but we are getting others in KDOT to care...
- FWD/TSD and project scopes (do we need structure)



# Thank you

---

- [rick.miller@ks.gov](mailto:rick.miller@ks.gov)

